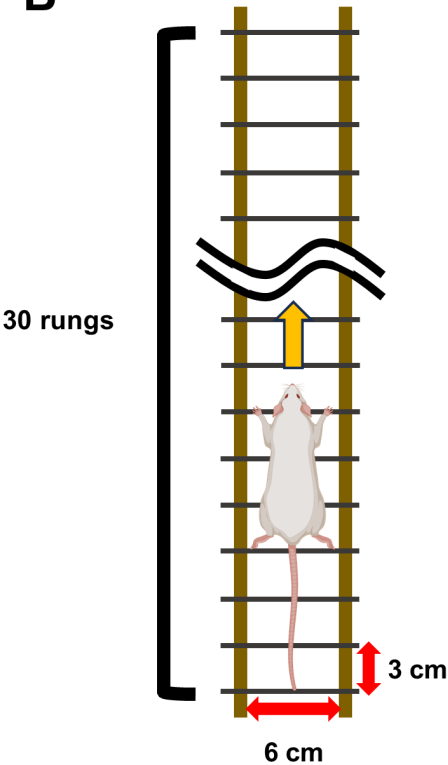


A

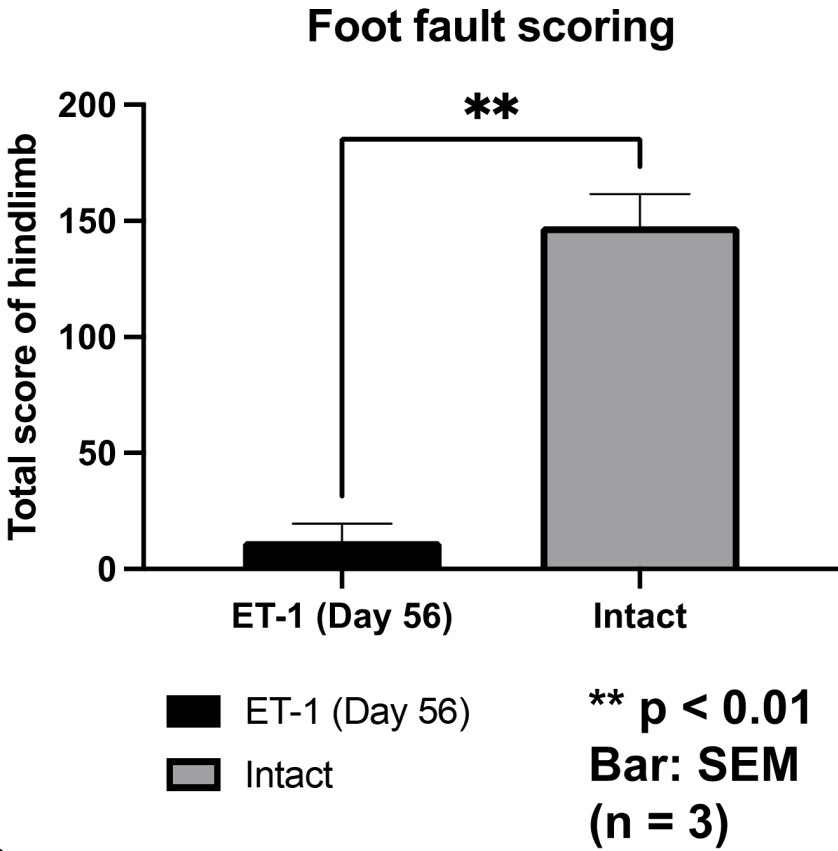
Category	Type of foot misplacement	Details
0	Total miss	the limb did not touch the rung (missed a rung) and resulted in a fall
1	Deep slip	the limb slipped off a rung and a fall occurred
2	Slight slip	the limb slipped off a rung during weight bearing, but a fall did not occur and the rodent interrupts walking
3	Replacement	before weight bearing the limb on a rung, the rodent quickly lifted and placed the foot on another rung
4	Correction	the limb is clearly about to be placed on a rung, but the rodent quickly changes the feet placement to another rung without touching the first rung
5	Partial placement	the limb is placed on the rung either using the wrist or digits for the forelimb or heel or toes for the hindlimb
6	Correct placement	the full body weight bearing is applied on a rung with the midportion of the foot

- Score according to the above system and compare total scores (ET-1 group, intact, n = 3 each)

B



C



Supplementary figure 3