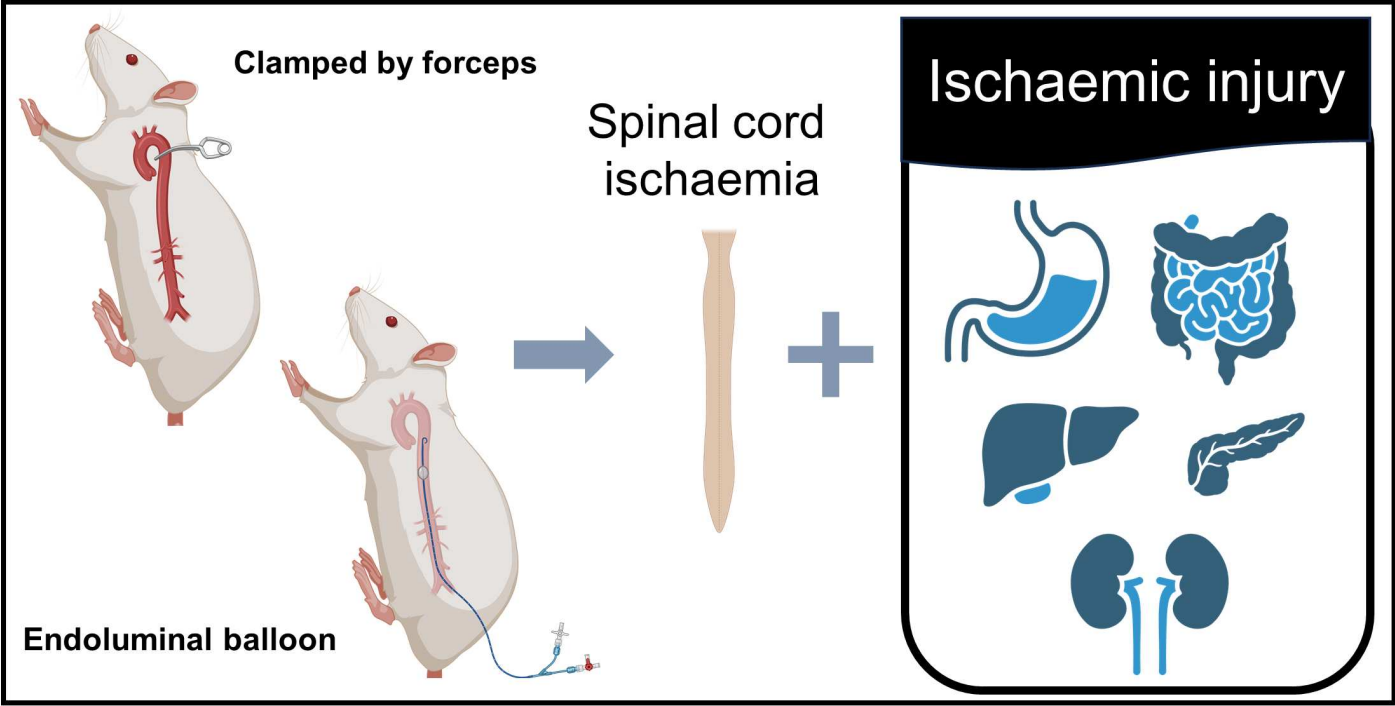


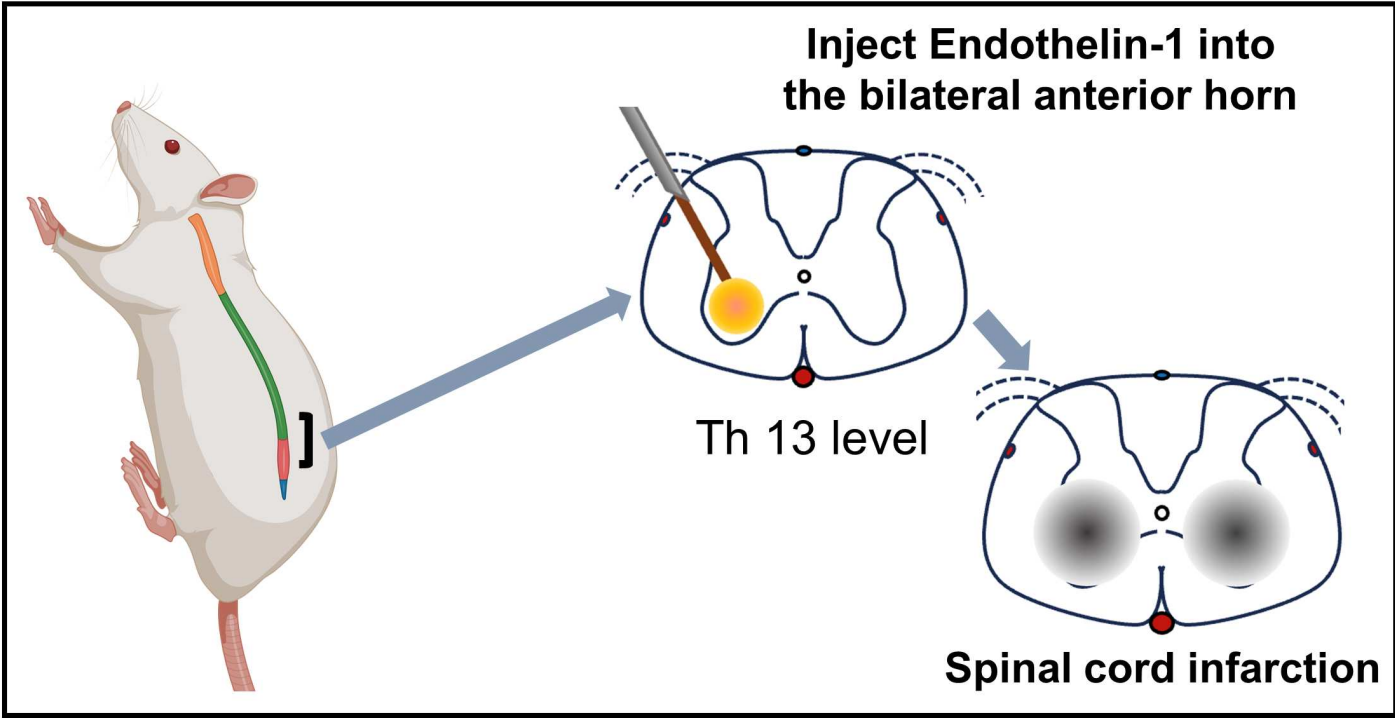
## Aortic clamp model

- Previous models have not reported long-term survival due to visceral ischaemic injury.
- The anatomical diversity of the spinal cord vasculature determines whether a spinal cord infarction occurs.



## Endothelin-1 injection model

- Our technique induces spinal cord infarction at the targeted site.
- The results induced by this methodology are not influenced by the course variations in the spinal cord arteries.



Supplementary figure 1