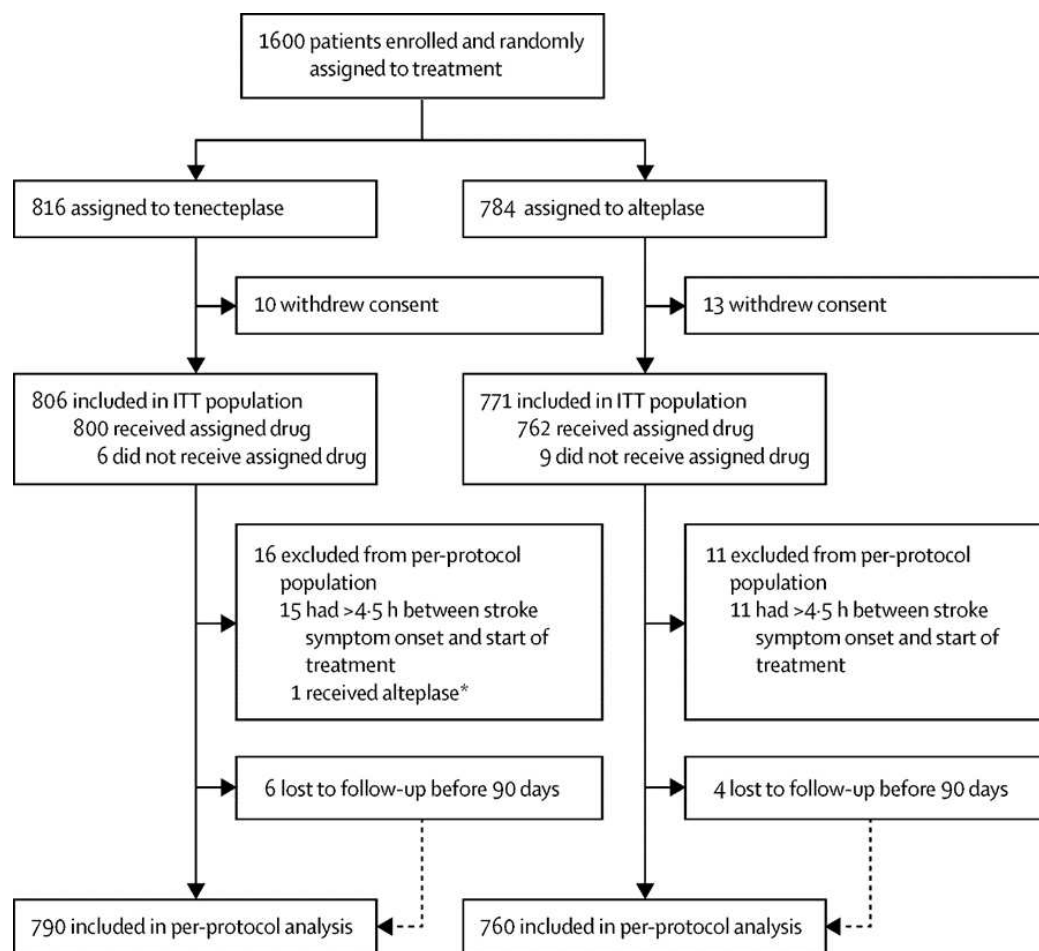


Supplement 2

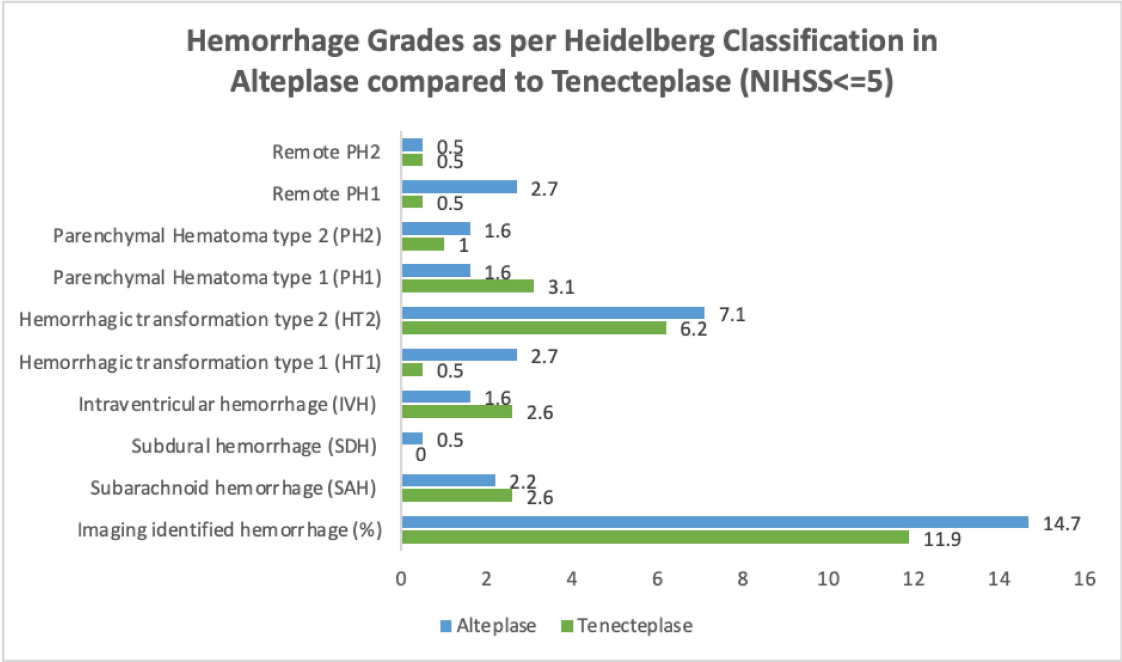
- eFigure 1. Participant flow diagram
- eFigure 2. Comparison of hemorrhage grades as per Heidelberg Bleeding Classification between groups
- eFigure 3. Kaplan-Meier curve showing time to death compared between groups.
- eTable 1. Comparison of NIHSS scores between groups

eFigure 1. Participant flow diagram

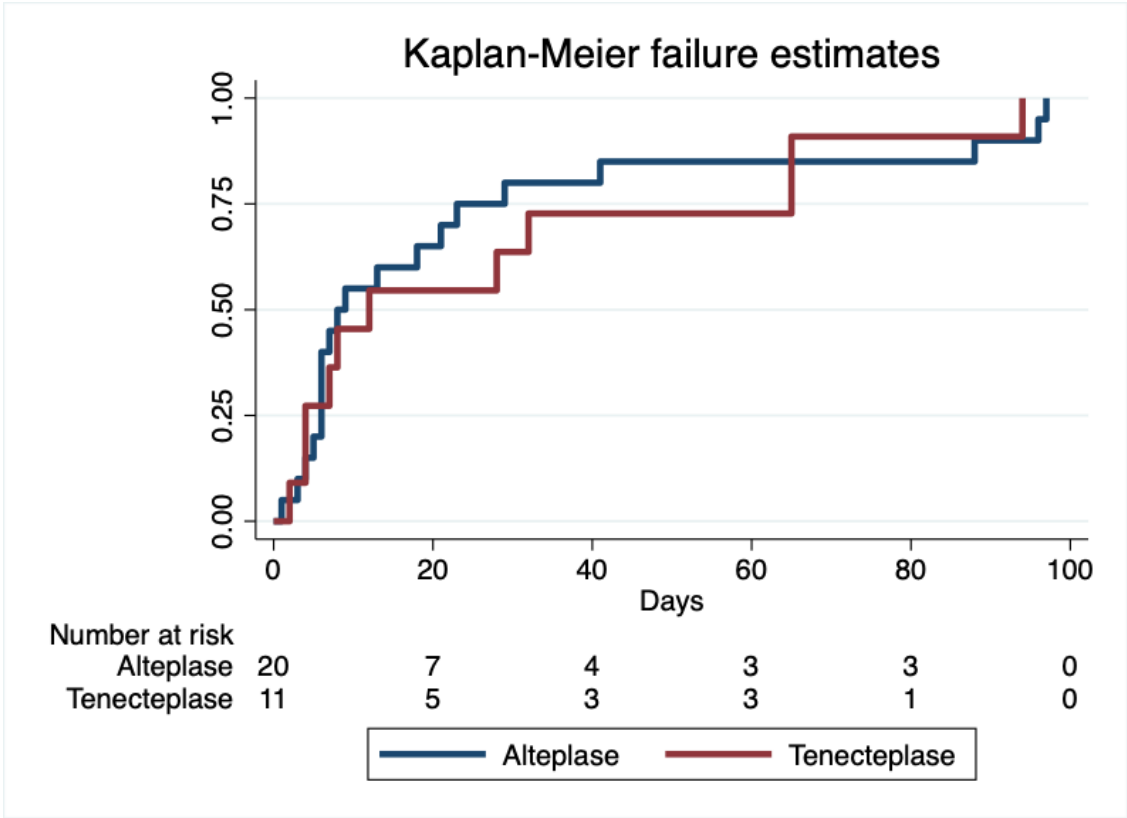


ITT=intention-to-treat. *The one patient who crossed over and received alteplase instead of tenecteplase were included in the alteplase group for safety analysis.

eFigure 2. Comparison of hemorrhage grades as per Heidelberg Bleeding Classification between alteplase and tenecteplase in minor stroke (NIHSS ≤ 5).



eFigure 3. Kaplan-Meier curve showing time to death in alteplase vs tenecteplase group.



eTable 1. Comparison of NIHSS scores between groups

Alteplase group		
NIHSS	n (%)	mRS 0-1, n
0	2 (1.1)	0
1	8 (4.4)	5
2	14 (7.6)	6
3	41 (22.3)	19
4	57 (31.0)	28
5	62 (33.7)	28
Tenecteplase group		
NIHSS	n (%)	mRS 0-1, n
0	8 (4.1)	5
1	7 (3.6)	3
2	25 (12.9)	11
3	47 (24.2)	25
4	45 (23.2)	23
5	62 (32.0)	33