

Supplementary table 1: Baseline Characteristics of Propensity Score-Matched (PSM) Cohort

Characteristics	General anesthesia (N = 65)	Non-general anesthesia (N = 65)	P value
Age, median (IQR), yr	69 (64-74)	65 (59-73)	0.17
Male sex, no. (%)	38 (58.5)	40 (61.5)	0.72
Medical history, no. (%)			
Hypertension	40 (61.5)	44 (67.7)	0.46
Diabetes mellitus	12 (18.5)	15 (23.1)	0.52
Hyperlipidemia	4 (6.2)	5 (7.7)	0.73
Atrial fibrillation	19 (29.2)	12 (18.5)	0.15
Ischemic stroke	9 (13.9)	8 (12.3)	0.79
Coronary heart disease	9 (13.9)	11 (16.9)	0.63
NIHSS score (IQR)	17 (14-20)	16 (14-20)	0.44
ASPECTS value based on CT			
Median value (IQR)	3 (3-4)	3 (3-4)	0.93
Distribution, no. (%)			0.92
0-2	11 (16.9)	11 (16.9)	
3	27 (41.5)	26 (40.0)	
4	17 (26.2)	20 (30.8)	
5	10 (15.4)	8 (12.3)	
Infarct-core volume, median (IQR), ml	66 (29-90)	70 (43-95)	0.59
Penumbra volume, median (IQR), ml	182 (144-235)	188 (143-219)	0.84
Prestroke mRS, no. (%)			0.54
0	60 (92.3)	58 (89.2)	
1	5 (7.7)	7 (10.8)	
Baseline SBP, median (IQR), mmHg	149 (133-168)	141 (128-163)	0.33
Admission glucose, median (IQR), mmol/L	7.1 (6.4-8.5)	6.9 (5.9-10.2)	0.86
Intravenous thrombolysis, no. (%)	19 (29.2)	22 (33.9)	0.57
Occlusion site, no. (%)			0.54
ICA	25 (38.5)	19 (29.2)	
M1 segment	39 (60.0)	45 (69.2)	
M2 segment	1 (1.5)	1 (1.5)	
Stroke classification, no. (%)			0.74
Atherothrombotic	17 (26.2)	16 (24.6)	
Cardioembolic	31 (47.7)	28 (43.1)	
Undetermined and others	17 (26.2)	21 (32.3)	

Interval between onset and hospital arrival, median (IQR), min	323 (180-600)	366 (228-704)	0.21
Interval between onset and first imaging, median (IQR), min	367 (238-677)	398 (276-734)	0.40
Onset to randomization			
Median (IQR), min	452 (274-697)	462 (312-778)	0.44
Distribution, no. (%)			0.72
< 6 hr	26 (40.0)	24 (36.9)	
6 to 24 hr	39 (60.0)	41 (63.1)	
Interval between onset and puncture, median (IQR), min	510 (326-765)	460 (348-781)	0.73
Interval between onset and recanalization, median (IQR), min	606 (395-856)	574 (431-876)	0.62
Interval between puncture and recanalization, median (IQR), min	78 (52-106)	73 (43-115)	0.51
Operative time [§] , median (IQR), min	145 (115-185)	129 (95-180)	0.19

Abbreviations: IQR=interquartile range; NIHSS=National Institutes of Health Stroke Scale; ASPECTS=Alberta Stroke Program Early CT score; mRS=modified Rankin scale; SBP=systolic blood pressure; ICA=internal carotid artery; M=middle cerebral artery

§ Operative time is defined as the difference between "the time the patient arrives at the catheterization room" and "the time the patient leaves the catheterization room".

Supplementary table 2: Sensitivity analysis: general anesthesia vs. non-general anesthesia

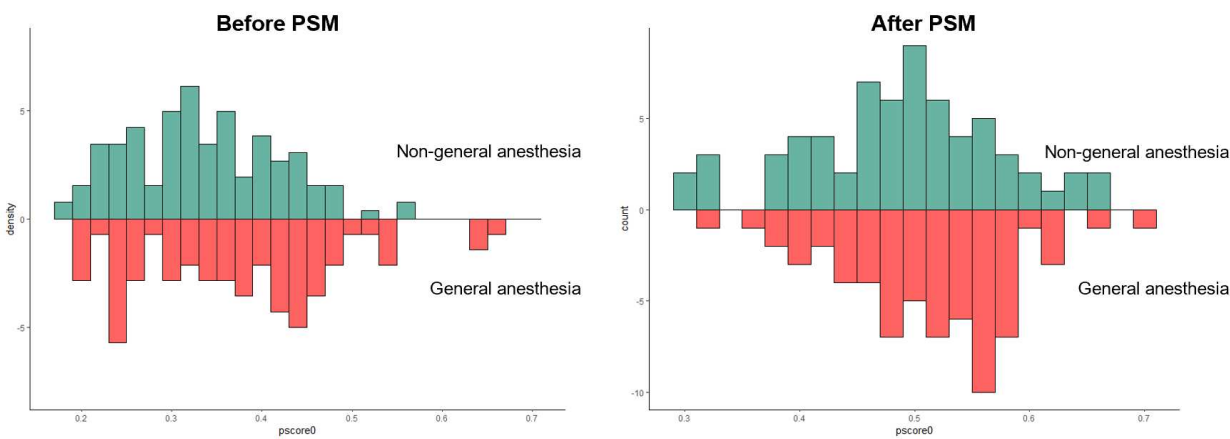
	Adjusted Model 2 ^a		Adjusted Model 3 ^b	
	Effect size (95% CI) ^c	P-value	Effect size (95% CI) ^c	P-value
mRS of 0-2 at 90-day	0.93 (0.48, 1.80)	0.83	1.00 (0.52, 1.91)	0.99
mRS score at 90-day	0.77 (0.47, 1.26)	0.30	0.83 (0.51, 1.36)	0.46
mRS of 0-3 at 90-day	0.83 (0.45, 1.52)	0.55	0.87 (0.47, 1.58)	0.64
36-hour ΔNIHSS	-2.99 (-5.40, -0.59)	0.01	-2.64 (-5.00, -0.28)	0.03
Change from baseline in infarct volume	8.14 (-18.75, 35.04)	0.55	2.29 (-25.00, 29.59)	0.87
Successful reperfusion (mTICI 2b-3)	1.27 (0.60, 2.68)	0.53	1.08 (0.53, 2.21)	0.84
Pneumonia	2.13 (1.06, 4.27)	0.03	2.03 (1.03, 3.98)	0.04
sICH within 48 hr	1.27 (0.36, 4.49)	0.71	1.18 (0.37, 3.76)	0.78
Any ICH within 48 hr	0.99 (0.56, 1.75)	0.98	0.93 (0.53, 1.63)	0.80
Death within 90-day	1.67 (0.83, 3.36)	0.15	1.50 (0.76, 2.99)	0.25
Decompressive hemicraniectomy during hospitalization	1.66 (0.54, 5.06)	0.38	1.71 (0.58, 5.01)	0.33
Any procedural complications	1.48 (0.52, 4.24)	0.46	1.30 (0.46, 3.65)	0.62

^a Adjusted for age, pre-stroke mRS score, baseline NIHSS score, baseline ASPECTS, core infarct volume, time from onset to puncture, and receipt of intravenous thrombolysis in the per-protocol population.

^b Adjusted for age, pre-stroke mRS score, baseline NIHSS score, baseline ASPECTS, core infarct volume, time from onset to puncture, receipt of intravenous thrombolysis and operation time in the intention-to-treat population.

^c The results of the binary logistic regression are reported as OR with 95% CI, those of the linear regression as β with 95% CI, and those of the ordinal logistic regression as cOR with 95% CI. Abbreviations: aOR=adjusted odds ratio; mRS=modified Rankin Scale; NIHSS=National Institutes of Health Stroke Scale; mTICI=modified thrombolysis in cerebral infarction; ICH=intracranial hemorrhage; sICH=symptomatic intracranial hemorrhage

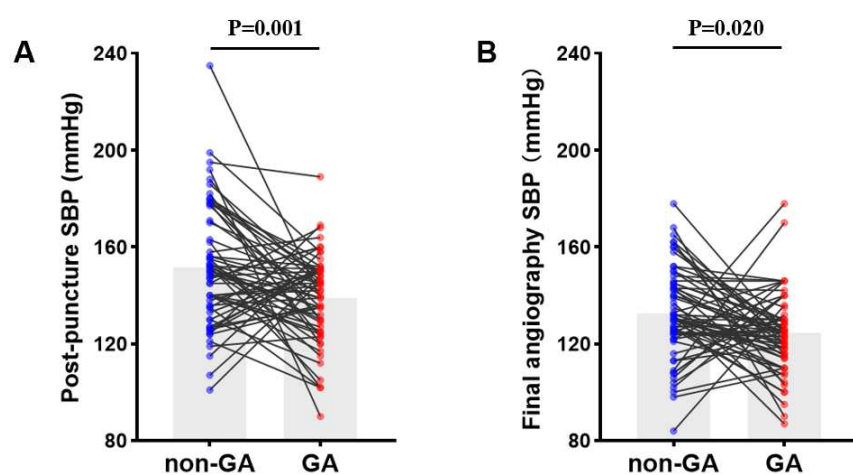
Supplementary Figure 1: Probability Density Plots Pre- and Post- Propensity Score Matching (PSM)



Supplementary Figure 2: Systolic blood pressure (SBP) at critical time points in the PSM cohort

A. After groin puncture

B. After final angiography



The ANGEL-ASPECT Study Group

Hospital / Institution	Researchers
Beijing Tiantan Hospital, Capital Medical University	Zhongrong Miao (PI), Yongjun Wang, Yilong Wang, Xingquan Zhao, Liping Liu, Jing Jing, Zhe Zhang, Yingkui Zhang, Dapeng Sun, Zhongqi Qi, Shuo Li, Zhenqiang Liu, Zequan Yu, Jingyu Zhang, Fangguang Chen, Kangyue Li, Kai Zhang, Mingkai Hu, Xiaochuan Huo, Gaoting Ma, Xu Tong, Xuelei Zhang, Yuesong Pan, Aoming Jin, Xianglong Xiang, Mengxing Wang, Hongyi Yan
Xuanwu Hospital, Capital Medical University	Xunming Ji
Huashan Hospital, Fudan University	Qiang Dong, Kun Fang, Yi Dong
The First Affiliated Hospital, Jinan University	Anding Xu
Affiliated Jinling Hospital, Medical School of Nanjing University	Xinfeng Liu
Xinqiao Hospital and The Second Affiliated Hospital, Army Medical University	Qingwu Yang
Qilu Hospital, Shandong University	Wei Wu
Changhai Hospital, Naval Medical University	Jianmin Liu, Pengfei Yang
Peking University First Hospital	Chen Yao
The Southwest Hospital of Army Medical University	Kangning Chen
The First Affiliated Hospital of Zhengzhou University	Bo Song
University of California at Los Angeles	David S. Liebeskind
St Michael's Hospital, University of Toronto	Vitor Mendes Pereira
Boston Medical Center	Thanh N. Nguyen
Xiangtan Central Hospital	Guangxiong Yuan (PI)
Linyi People's Hospital	Hongxing Han (PI)
Zhangzhou Affiliated Hospital of Fujian Medical University	Wenhuo Chen (PI)
Tianjin huanhu hospital	Ming Wei (PI)
Anyang People's Hospital	Jiangang Zhang (PI)
Yijishan Hospital of Wannan Medical College	Zhiming Zhou (PI)
The first people's hospital of Chenzhou	Xiaoxi Yao (PI)
Bin zhou People's Hospital	Guoqing Wang (PI)
Yancheng Third People's Hospital	Weigen Song (PI)
Lishui Municipal Central Hospital	Xueli Cai (PI)
China-Japan Union Hospital of Jilin University	Guangxian Nan (PI)
Dalian Municipal Central Hospital affiliated with Dalian Medical University	Di Li (PI)
Guangdong Provincial Hospital of Chinese Medicine	Yizhou Wang (PI)
ZhongShan City People's Hospital	Wentong Ling (PI)
Shantou Central Hospital	Chuwei Cai (PI)
Nanyang Central Hospital	Changming Wen (PI)
Taizhou hospital of Zhejiang Province	En Wang (PI)
Liaocheng People's Hospital	Liyong Zhang (PI)
Baotou Centre Hospital	Changchun Jiang (PI)

Shenzhen Hospital, Southern Medical University	Yajie Liu (PI)
Maoming People's Hospital	Geng Liao (PI)
The Second Affiliated Hospital of GuangZhou Medical University	Xiaohui Chen (PI)
Henan Provincial People's Hospital, Zhengzhou University	Tianxiao Li (PI)
Yongchuan Hospital of Chongqing Medical University	Shudong Liu (PI)
The affiliated hospital of South West Medical University	Jinglun Li (PI)
Shanxi Provincial People's Hospital	Yaxuan Sun (PI)
The Second Affiliated Hospital to Xiamen Medical College	Na Xu (PI)
Shengli Oilfield Central Hospital	Zong'en Gao (PI)
Songyuan Jilin oil Field Hospital	Dongsheng Ju (PI)
Liao Cheng the third people's hospital	Cunfeng Song (PI)
The First People's Hospital of Changzhou	Jinggang Xuan (PI)
Taiyuan Central Hospital	Feng Zhou (PI)
Affiliated Jiangmen Traditional Chinese Medicine Hospital of Ji'nan University	Qing Shi (PI)
Sichuan Mianyang 404 Hospital	Jun Luo (PI)
JingJiang People's Hospital, the Seventh Affiliated Hospital of Yangzhou University	Yan Liu (PI)
Tianjin TEDA Hospital	Zaiyu Guo (PI)
The second Nanning People's Hospital	Tong Li (PI)
West China Hospital, Sichuan University	Hongbo Zheng (PI)
First Affiliated Hospital School of Medicine Shihezi University	Linshi Dai (PI)
Siping Central People's Hospital	Junfeng Zhao (PI)
Langfang Changzheng Hospital	Liqiang Gui (PI)
Beijing Luhe Hospital, Capital Medical University	Xiaokun Geng (PI)
Mianyang Central Hospital	Yufeng Tang (PI)
Hangzhou First People's Hospital	Congguo Yin (PI)
The Affiliated Hospital of Guizhou Medical University	Hua Yang (PI), Zeguang Ren
Ericure Medical Technology. Co., Ltd.	Ruiyang An, Yuying Sun, Yanan Wu, Chunlai Yu, Shuangcheng Zheng
Blueballoon Medical Research Co. LTD	Yuanling He, Chunyang Li, Weixia Kong
Wisemed Medical Technology. Co., Ltd.	Yuhuan Chen, Chenhao Guo, Fengjie Ji, Pengshan Ji, Lei Liu, Xinghua Lu, Guangkuo Luo, Nanjing Wang, Yu Zhang, Bo Liu, Jian Yang, Jingjing Deng, Juan Wang, Wanru Wang, Hang Yu, Le Cui, Wenwen Liu, Ziyong Wang, Xia Zhao, Zhou Zhou