

## M2 middle cerebral artery dissection on 7T MRI

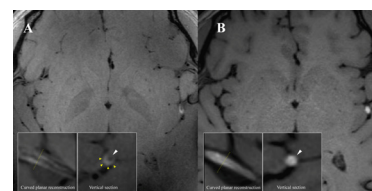
Xuewei Xie <sup>1,2</sup>, Zhe Zhang<sup>2,3</sup>, Qingle Kong<sup>4</sup>, Hui Qu<sup>1,2</sup>, Jing Jing<sup>1,2,3</sup>

**To cite:** Xie X, Zhang Z, Kong Q, et al. M2 middle cerebral artery dissection on 7T MRI. *Stroke & Vascular Neurology* 2022;**0**. doi:10.1136/svn-2022-001557

XX and ZZ contributed equally. HQ and JJ contributed equally.

Received 23 February 2022  
Accepted 29 June 2022

A 36-year-old man was admitted for acute right extremity weakness with multiple acute infarctions in the left middle cerebral artery (MCA) territory. 7T and 3T MRI scans were completed at 9 and 10 days after symptom onset (**figure 1**). There was susceptibility vessel sign, which represents red blood cell dominant intraluminal thrombus,<sup>1 2</sup> at left distal M2 segment MCA on susceptibility-weighted imaging (**figure 1B**). 7T vessel wall MRI showed a typical feature of a long segment dissection at the left distal M2 segment of MCA with a mural haematoma and the residual lumen (**figure 2A**), which was not seen on 3T (**figure 2B**). Vessel wall MRI was a valuable tool for the diagnosis of intracranial artery dissection.<sup>2 3</sup> This case indicated that 7T vessel wall MRI may provide better detail on the pathological change than traditional 3T MRI for diagnosing distal intracranial arterial dissection, the diagnose otherwise could be missed.



**Figure 2** (A) 7T 3D T1-SPACE MRI (MAGNETOM Terra, Siemens Healthcare, Erlangen, Germany. Voxel size=0.4×0.4×0.4 mm<sup>3</sup>) showing left distant M2 segment MCA mural haematoma and residual lumen, and axial reformatted images showing a semilunar hyperintense signal caused by a mural haematoma (yellow triangle) and an eccentric hypointense signal attributable to the residual lumen (white triangle). (B) 3T 3D T1-SPACE MRI (MAGNETOM Prisma, Siemens Healthcare, Erlangen, Germany. Voxel size=0.54×0.54×0.54 mm<sup>3</sup>) showing left distant M2 segment MCA intraluminal thrombus formation and axial reformatted images showing only hyperintense signal (white triangle) with an unclear residual lumen. MCA, middle cerebral artery.



© Author(s) (or their employer(s)) 2022. Re-use permitted under CC BY. Published by BMJ.

<sup>1</sup>Department of Neurology, Beijing Tiantan Hospital, Capital Medical University, Beijing, China

<sup>2</sup>China National Clinical Research Center for Neurological Diseases, Beijing, China

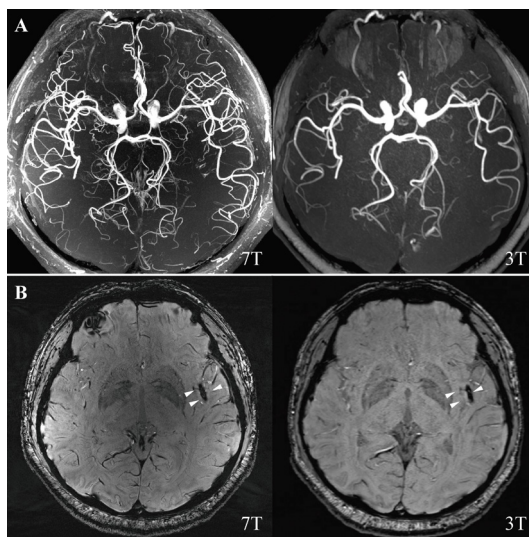
<sup>3</sup>Tiantan Neuroimaging Center of Excellence, Beijing, China

<sup>4</sup>MR Collaboration, Siemens Healthineers Ltd, Beijing, China

## Correspondence to

Dr Jing Jing;  
jingj\_bjtyy@163.com

Dr Hui Qu, Department of Neurology, Beijing Tiantan Hospital, Capital Medical University, Beijing, China; quhuittty@163.com



**Figure 1** (A) 7T and 3T magnetic resonance angiography. (B) 7T and 3T SWI were showing blooming hypointense signals (susceptibility vessel sign) in the distal M2 segment of the left MCA (white triangle). MCA, middle cerebral artery; SWI, susceptibility-weighted imaging.

**Contributors** XX: drafting of the manuscript. ZZ: analysis and interpretation of data. QK: analysis and interpretation of data. HQ: acquisition of images and data. JJ: acquisition of images and data, and drafting of the manuscript.

**Funding** The authors have not declared a specific grant for this research from any funding agency in the public, commercial or not-for-profit sectors.

**Competing interests** None declared.

**Patient consent for publication** Consent obtained directly from patient(s)

**Provenance and peer review** Not commissioned; externally peer reviewed.

**Open access** This is an open access article distributed in accordance with the Creative Commons Attribution 4.0 Unported (CC BY 4.0) license, which permits others to copy, redistribute, remix, transform and build upon this work for any purpose, provided the original work is properly cited, a link to the licence is given, and indication of whether changes were made. See: <https://creativecommons.org/licenses/by/4.0/>.

## ORCID iD

Xuewei Xie <http://orcid.org/0000-0001-8154-1957>

## REFERENCES

- 1 Liebeskind DS, Sanossian N, Yong WH, et al. CT and MRI early vessel signs reflect clot composition in acute stroke. *Stroke* 2011;42:1237–43.

- 2 Wu Y, Wu F, Liu Y, *et al.* High-Resolution magnetic resonance imaging of Cervicocranial artery dissection: imaging features associated with stroke. *Stroke* 2019;50:3101–7.
- 3 Chen H, Li Z, Luo B, *et al.* Anterior cerebral artery dissection diagnosed using high-resolution MRI. *Neurology* 2015;85:481.